



GeneQuery™ Human Smooth Muscle Cell Biology qPCR Array Kit (GQH-SMC) Catalog #GK097

Product Description

ScienCell's GeneQuery™ Human Smooth Muscle Cell Biology qPCR Array Kit (GQH-SMC) is designed to facilitate gene expression profiling of 88 key genes involved in human smooth muscle cell (SMC) biology, such as vascular SMC contraction, SMC phenotypic switching, and the extracellular matrix (ECM) synthesis. Genes implicated in selected SMC related disorders are also included in the array. Brief examples of how genes may be grouped according to their functions are shown below:

- **SMC markers:** ACTA2, CDH5, CALD1, HEXIM1, HRH2, MLNR, TAGLN, DES, CSPG4, SMTN, MKL1/2
- **Vascular SMC contraction:** ANO1, ADRA1s, NPR1/2, GNAs, MYLKs, ADORA2s, EDNRA, MYH11, MYLs
- **SMC phenotypic switching:** MYH11, MEF2B, SRF, ELK1, MYOCD, GATA6, MKL1/2, RHOA, TGFB1, NOTCH1/3, HEY2
- **SMC heterogeneity:** ACTA2, TAGLN, CNN2, MYH11, OGN, AQP1, PLN, MGP, SPP1, KDR, SMTN, VCL, DES
- **ECM synthesis:** LAMA5, collagens, ELN, OGN, MGP, SPP1, FGA/B/G
- **Genes implicated in**
 - **systemic hypertension:** PTGIS, AGT, ADD1, AGTR1, GNB3, NOS3
 - **achalasia:** NOS1, AAAS, GMPPA, GUCY1A3, HLA-DQA1/B1
 - **bronchospasm/asthma:** HNMT, IL13, CCL11, ADRB2, ALOX5, SCGB3A2

GeneQuery™ qPCR array kits are qPCR ready in a 96-well plate format, with each well containing one primer set that can specifically recognize and efficiently amplify a target gene's cDNA. The carefully designed primers ensure that: (i) the optimal annealing temperature in qPCR analysis is 65°C (with 2 mM Mg²⁺, and no DMSO); (ii) the primer set recognizes all known transcript variants of target gene, unless otherwise indicated; and (iii) only one gene is amplified. Each primer set has been validated by qPCR with melt curve analysis, and gel electrophoresis.

GeneQuery™ qPCR Array Kit Controls

Each GeneQuery™ plate contains eight controls (Figure 1).

- Five target housekeeping genes (β -actin, GAPDH, LDHA, NONO, and PPIH), which enable normalization of data.
- The Genomic DNA (gDNA) Control (GDC) detects possible gDNA contamination in the cDNA samples. It contains a primer set targeting a non-transcribed region of the genome.
- Positive PCR Control (PPC) tests whether samples contain inhibitors or other factors that may negatively affect gene expression results. The PPC consists of a predisposed synthetic DNA template and a primer set that can amplify it. The sequence of the DNA

template is not present in the human genome, and thus tests the efficiency of the polymerase chain reaction itself.

- The No Template Control (NTC) is strongly recommended, and can be used to monitor the DNA contamination introduced during the workflow such as reagents, tips, and the lab bench.

Kit Components

Component	Quantity	Storage
GeneQuery™ array plate with lyophilized primers	1	4°C or -20°C
Optical PCR plate seal	1	RT
Nuclease-free H ₂ O	2 mL	4°C

Additional Materials Required (Materials Not Included in Kit)

Component	Recommended
Reverse transcriptase	MultiScribe Reverse Transcriptase (Life Tech, Cat. #4311235)
cDNA template	Customers' samples
qPCR master mix	FastStart Essential DNA Green Master (Roche, Cat. #06402712001)

Quality Control

All the primer sets are validated by qPCR with melt curve analysis. The PCR products are analyzed by gel electrophoresis. Single band amplification is confirmed for each set of primers.

Product Use

GQH-SMC is for research use only. It is not approved for human or animal use, or for application in clinical or *in vitro* diagnostic procedures.

Shipping and Storage

The product is shipped at ambient temperature. Upon receipt, the plate should be stored at 4°C and is good for up to 12 months. For long-term storage (>1 year), store the plate at -20°C in a manual defrost freezer.

Procedures

Note: The primers in each well are lyophilized.

1. Prior to use, allow plates to warm to room temperature.
2. Briefly centrifuge at 1,500x g for 1 minute before slowly peeling off the seal.
3. Prepare 20 μ l PCR reactions for one well as shown in Table 1.

Table 1

cDNA template	0.2 – 250 ng
2x qPCR master mix	10 μ l
Nuclease-free H ₂ O	variable
<i>Total volume</i>	<i>20 μl</i>

Important: *Only use polymerases with hot-start capability to prevent possible primer-dimer formation. Only use nuclease-free reagents in PCR amplification.*

4. Add the mixture of 2x qPCR master mix, cDNA template, and nuclease-free H₂O to each well containing the lyophilized primers. Seal the plate with the provided optical PCR plate seal.

Important: *In NTC control well, do NOT add cDNA template. Add 2x qPCR master mix and nuclease-free H₂O only.*

5. Briefly centrifuge the plates at 1,500x g for 1 minute at room temperature. For maximum reliability, replicates are strongly recommended (minimum of 3).
6. For PCR program setup, please refer to the instructions of the master mix of the user's choice. We recommend a typical 3-step qPCR protocol for a 200nt amplicon:

Three-step cycling protocol

Step	Temperature	Time	Number of cycles
Initial denaturation	95°C	10 min	1
Denaturation	95°C	20 sec	40
Annealing	65°C	20 sec	
Extension	72°C	20 sec	
Data acquisition	Plate read		
<i>Recommended</i>	<i>Melting curve analysis</i>		1
Hold	4°C	Indefinite	1

7. (Optional) Load the PCR products on 1.5% agarose gel and perform electrophoresis to confirm the single band amplification in each well.

Figure 1. Layout of GeneQuery™ qPCR array kit controls.

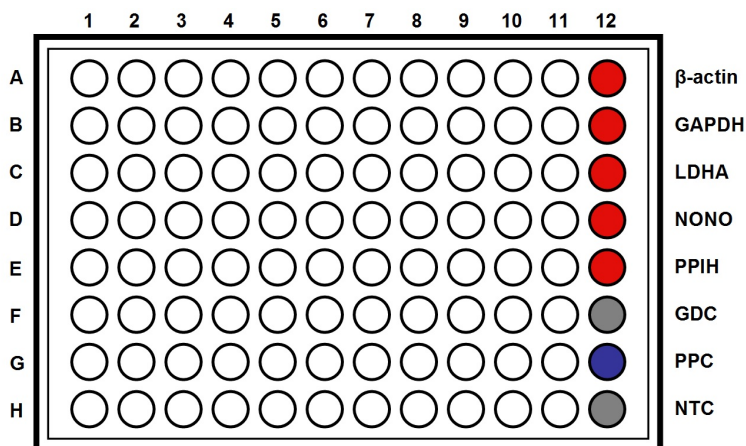


Table 2. Interpretation of control results:

<i>Controls</i>	<i>Results</i>	<i>Interpretation</i>	<i>Suggestions</i>
Housekeeping gene controls	Variability of a housekeeping gene's Cq value	The expression of the housekeeping gene is variable in samples; cycling program is incorrect	Choose a constantly expressed target, or analyze expression levels of multiple housekeeping genes; use correct cycling program and make sure that all cycle parameters have been correctly entered
gDNA Control (GDC)	$Cq \geq 35$	No gDNA detected	N/A
	$Cq < 35$	The sample is contaminated with gDNA	Perform DNase digestion during RNA purification step
Positive PCR Control (PPC)	$Cq > 30$; or The Cq variations > 2 between qPCR Arrays.	Poor PCR performance; possible PCR inhibitor in reactions; cycling program incorrect	Eliminate inhibitor by purifying samples; use correct cycling program and make sure that all cycle parameters have been correctly entered
No Template Control (NTC)	Positive	DNA contamination in workflow	Eliminate sources of DNA contamination (reagents, plastics, etc.)

Figure 2. A typical amplification curve showing the amplification of a qPCR product.



Figure 3. A typical melting peak of a qPCR product.



Quantification Method: Comparative $\Delta\Delta Cq$ (Quantification Cycle Value) Method

1. **Note:** Please refer to your qPCR instrument's data analysis software for data analysis. The method provided here serves as guidance for quick manual calculations.

You can use one or more housekeeping genes as a reference to normalize samples.

Important: We highly recommend using all 5 housekeeping genes included in this kit, β -actin, GAPDH, LDHA, NONO, and PPIH.

2. For a single housekeeping gene, ΔCq (ref) is the quantification cycle number change for that housekeeping gene (HKG) between an experimental sample and control sample.

$$\Delta Cq \text{ (ref)} = Cq \text{ (HKG, experimental sample)} - Cq \text{ (HKG, control sample)}$$

When using multiple housekeeping genes as a reference, we recommend normalizing using the geometric mean [1] of the expression level change, which is the same as normalizing using the arithmetic mean of ΔCq of the selected housekeeping genes.

ΔCq (ref) = average (ΔCq (HKG1), ΔCq (HKG2),....., ΔCq (HKG n)) (n is the number of housekeeping genes selected)

If using all 5 housekeeping genes included in this kit, β -actin, GAPDH, LDHA, NONO, and PPIH, use the following formula:

$$\Delta Cq \text{ (ref)} = (\Delta Cq(\beta\text{-actin}) + \Delta Cq(\text{GAPDH}) + \Delta Cq(\text{LDHA}) + \Delta Cq(\text{NONO}) + \Delta Cq(\text{PPIH})) / 5$$

Note: ΔCq (HKG) = Cq (HKG, experimental sample) - Cq (HKG, control sample), and ΔCq (HKG) value can be positive, 0, or negative.

3. For any of your genes of interest (GOI),

$$\Delta Cq \text{ (GOI)} = Cq \text{ (GOI, experimental sample)} - Cq \text{ (GOI, control sample)}$$

$$\Delta\Delta Cq = \Delta Cq \text{ (GOI)} - \Delta Cq \text{ (ref)}$$

$$\text{Normalized GOI expression level fold change} = 2^{-\Delta\Delta Cq}$$

References

[1] Vandesompele J, De Preter K, Pattyn F, Poppe B, Van Roy N, De Paepe A, Speleman F. (2002) "Accurate normalization of real-time quantitative RT-PCR data by geometric averaging of multiple internal control genes." *Genome Biol.* 3(7): 1-12.

Example: Comparative $\Delta\Delta Cq$ (Quantification Cycle Value) Method

Table 3. Cq (Quantification Cycle) values of 2 genes-of-interest and 5 housekeeping genes obtained for experimental and control samples.

Samples	Genes of Interest		Housekeeping Genes				
	GOI1	GOI2	<i>β-actin</i>	<i>GAPDH</i>	<i>LDHA</i>	<i>NONO</i>	<i>PPIH</i>
Experimental	21.61	22.19	17.16	17.84	20.12	19.64	26.40
Control	33.13	26.47	18.20	18.48	20.57	19.50	26.55

$$\begin{aligned}\Delta Cq(\text{ref}) &= (\Delta Cq(\beta\text{-actin}) + \Delta Cq(\text{GAPDH}) + \Delta Cq(\text{LDHA}) + \Delta Cq(\text{NONO}) + \Delta Cq(\text{PPIH})) / 5 \\ &= ((17.16 - 18.20) + (17.84 - 18.48) + (20.12 - 20.57) + (19.64 - 19.50) + (26.40 - 26.55)) / 5 \\ &= -0.43\end{aligned}$$

$$\begin{aligned}\Delta Cq(\text{GOI1}) &= 21.61 - 33.13 \\ &= -11.52\end{aligned}$$

$$\begin{aligned}\Delta Cq(\text{GOI2}) &= 22.19 - 26.47 \\ &= -4.28\end{aligned}$$

$$\begin{aligned}\Delta\Delta Cq(\text{GOI1}) &= \Delta Cq(\text{GOI1}) - \Delta Cq(\text{ref}) \\ &= -11.52 - (-0.43) \\ &= -11.09\end{aligned}$$

$$\begin{aligned}\Delta\Delta Cq(\text{GOI2}) &= \Delta Cq(\text{GOI2}) - \Delta Cq(\text{ref}) \\ &= -4.28 - (-0.43) \\ &= -3.85\end{aligned}$$

$$\begin{aligned}\text{Normalized GOI1 expression level fold change} &= 2^{-\Delta\Delta Cq(\text{GOI1})} \\ &= 2^{11.09} \\ &= 2180\end{aligned}$$

$$\begin{aligned}\text{Normalized GOI2 expression level fold change} &= 2^{-\Delta\Delta Cq(\text{GOI2})} \\ &= 2^{3.85} \\ &= 14.4\end{aligned}$$

Conclusion: Upon treatment, expression level of GOI1 increased 2,180 fold, and expression level of GOI2 increased 14.4 fold.



GeneQuery™ Human Smooth Muscle Cell Biology qPCR Array Kit
(GQH-SMC)
 Catalog #GK097

GeneQuery™ Human Smooth Muscle Cell Biology qPCR Array Plate Layout*
 (*8 controls* in Bold and Italic)

	1	2	3	4	5	6	7	8	9	10	11	12
A	AAAS	ADRB2	AVPR1B	COL3A1	ELN	GNA13	HRH2	MLNR	MYOCD	NPR2	SCGB3A2	<i>β-actin</i>
B	ACTA2	AEBP1	CALCRL	COL4A1	FGA	GNB3	IL13	MYH11	NKX3-1	OGN	SMAD3	<i>GAPDH</i>
C	ADD1	AGT	CALD1	CSPG4	FGB	GUCY1A3	KDR	MYL6	NOS1	PLN	SMTN	<i>LDHA</i>
D	ADORA2A	AGTR1	CCL11	CYP4A11	FGG	HEXIM1	LAMA5	MYL6B	NOS3	PTGIR	SPP1	<i>NONO</i>
E	ADORA2B	ALOX5	CDH5	CYP4A22	GATA6	HEY2	MEF2B	MYL9	NOTCH1	PTGIS	SRF	<i>PPIH</i>
F	ADRA1A	ANO1	CNN2	DES	GMPPA	HLA-DQA1	MGP	MYLK	NOTCH3	RBP1	TAGLN	<i>GDC</i>
G	ADRA1B	AQP1	COL1A1	EDNRA	GNA11	HLA-DQB1	MKL1	MYLK2	NOX4	RBPJ	TGFB1	<i>PPC</i>
H	ADRA1D	AVPR1A	COL1A2	ELK1	GNA12	HNMT	MKL2	MYLK3	NPR1	RHOA	VCL	<i>NTC</i>

* gene selection may be updated based on new research and development

Appendix. Plate type choice chart.

Plate type A

Brand	Model	kit catalog #
ABI / Life Tech	ABI 5700	GK097-A
	ABI 7000	GK097-A
	ABI 7300	GK097-A
	ABI 7500	GK097-A
	ABI 7700	GK097-A
	ABI 7900 HT	GK097-A
	QuantStudio	GK097-A
	ViiA 7	GK097-A
Bio-Rad	Chromo4	GK097-A
	iCycler	GK097-A
	iQ5	GK097-A
	MyiQ	GK097-A
	MyiQ2	GK097-A
Eppendorf / Life Tech	Matercyler ep realplex 2	GK097-A
	Matercyler ep realplex 4	GK097-A
Stratagene	MX3000P	GK097-A
	MX3005P	GK097-A

Plate type B

Brand	Model	kit catalog #
ABI / Life Tech	ABI 7500 Fast	GK097-B
	ABI 7900 HT Fast	GK097-B
	QuantStudio Fast	GK097-B
	StepOnePlus	GK097-B
	ViiA 7 Fast	GK097-B
Bio-Rad	CFX Connect	GK097-B
	CFX96	GK097-B
	DNA Engine Opticon 2	GK097-B
Stratagene	MX4000	GK097-B

Plate type C

Brand	Model	kit catalog #
Roche	Lightcycler 96	GK097-C
	Lightcycler 480 (96-well)	GK097-C